



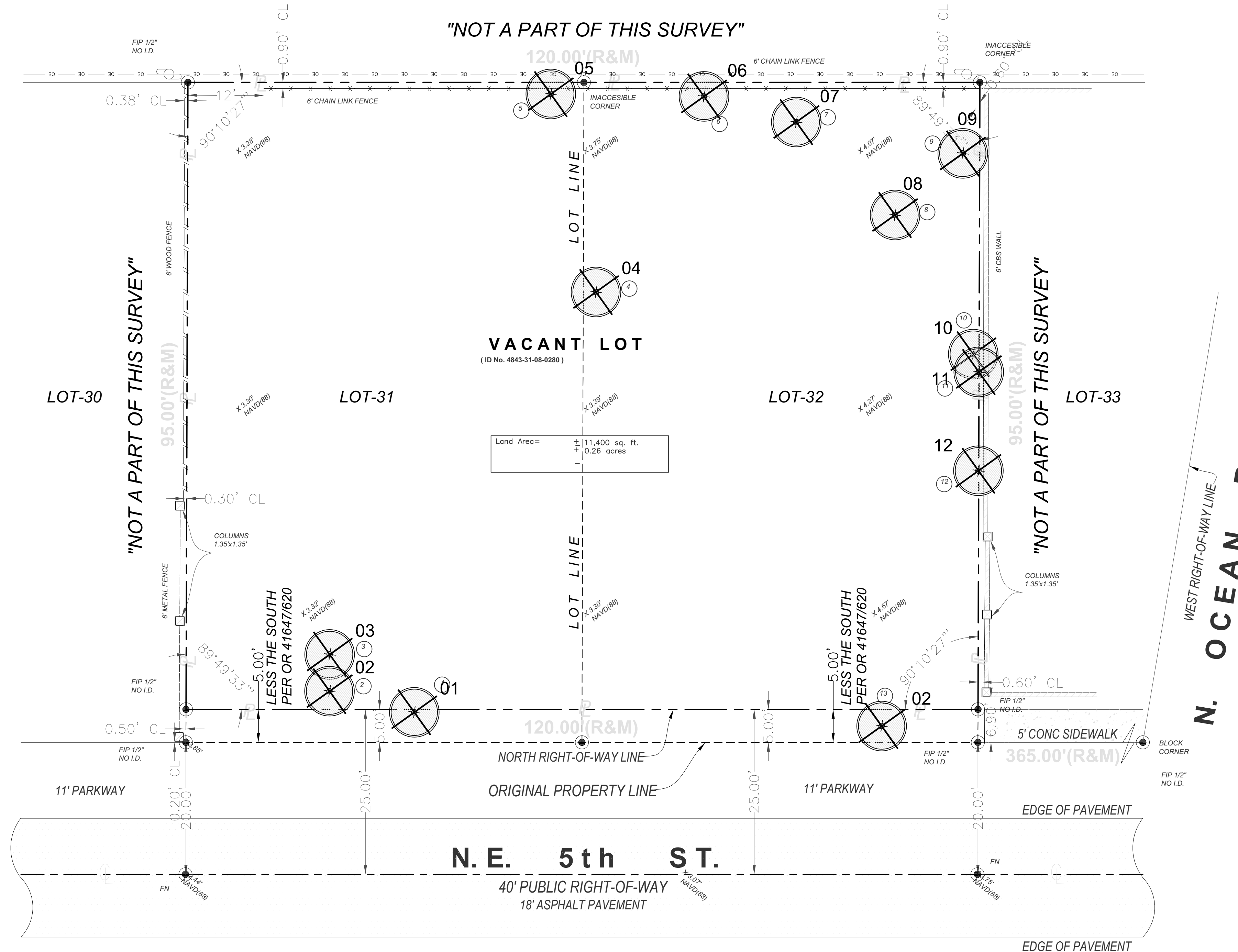
Digitally signed by James B. Euell  
Date: 2024.07.29 08:56:29 -0400

ECO POMPANO TOWNHOMES  
3225 NE 5TH STREET  
POMPANO BEACH FLORIDA 33062

DISTRIBUTION: DATE:  
SITE PLAN COMMENTS 07-06-24

DRAWING NAME:  
TREE DISPOSITION PLAN

DRAWING NUMBER:  
T-200



LEGEND

- EXISTING TREE / PALM TO REMAIN
- EXISTING TREE/ PALM TO BE REMOVED
- EXISTING TREE / PALM TO BE RELOCATED

NOTES:

- UNDERGROUND UTILITY LINES SHALL BE ROUTED AROUND THE TREE PROTECTION AREA WHERE POSSIBLE. IF THIS IS NOT POSSIBLE, A TUNNEL MADE BY A POWER-DRIVEN RAIL AUGER MAY BE USED UNDER THE TREE.
- INSTALLATION OF FENCES AND WALLS SHALL TAKE INTO CONSIDERATION THE ROOT SYSTEMS OF EXISTING TREES. POST-HOLES AND TRENCHES CLOSE TO TREES SHALL BE DUG BY HAND AND ADJUSTED AS NECESSARY TO AVOID DAMAGE TO MAJOR ROOTS.
- NO DEVELOPMENT OR CONSTRUCTION ACTIVITY--INCLUDING GRADING, THE OPERATION OR PARKING OF HEAVY EQUIPMENT, OR THE STORAGE OF MATERIAL--SHALL BE ALLOWED WITHIN THE TREE PROTECTION AREA.
- CONTRACTOR TO INSTALL PROTECTIVE FENCE BARRIER AROUND ALL EXISTING TREES TO REMAIN -- AT THE START OF THE PROJECT -- FENCE TO REMAIN IN PLACE THROUGHOUT THE DURATION OF THE PROJECT.

TREE PROTECTION DETAIL

OVERALL DIMENSION TO BE LOCATED AT DRIPLINE

THREE ROWS OF SPLIT RAIL FENCING (2"x4") TO BE PLACED TO REMAIN

WOODEN STAKES (2"x4" MIN) ON 5' CENTERS TO SUPPORT SPLIT RAIL FENCING

NOTE: BARRIER TO FORM CONTINUOUS FROM AROUND THE TREE OR GROUP OF TREES. SEE LANDSCAPE PLAN FOR LOCATION OF TREES TO REMAIN.

REVISIONS		LANDSCAPE STANDARDS	
BY	DATE	URBAN FORESTRY CITY OF POMPANO BEACH	TREE PROTECTION DETAIL
TCW	04/2010		
AS	09/2021		
SCALE: N.T.S.		APPROVED BY:	DATE: SEP 2021 DWG. NO. 104-1

Existing Tree Survey								
KEY	BOTANTICAL NAME	COMMON NAME	CALIPER (INCHES)	HEIGHT (FEET)	CANOPY (FEET)	CONDITION	DISPOSITION	VALUE
1	Casuarina equisetifolia	Australian Pine	20	50	40	Poor	Remove	N/A
2	Casuarina equisetifolia	Australian Pine	16	35	30	Poor	Remove	N/A
3	Cocos nucifera	Coconut Palm	8	16	15	Fair	Remove	\$770.00
4	Casuarina equisetifolia	Australian Pine	23	50	40	Poor	Remove	N/A
5	Cupaniopsis anacardioides	Carrotwood Tree	7	20	15	Good	Remove	N/A
6	Bischofia javanica	Bishopwood	30	60	30	Good	Remove	N/A
7	Sabal Palmetto	Sabal Palm	14	8	8	Good	Remove	\$300.00
8	Coccoloba uvifera	Seagrape	16	25	25	Fair	Remove	N/A
9	Casuarina equisetifolia	Australian Pine	21	60	40	Poor	Remove	N/A
10	Casuarina equisetifolia	Australian Pine	7	30	20	Poor	Remove	N/A
11	Casuarina equisetifolia	Australian Pine	7	30	20	Poor	Remove	N/A
12	Casuarina equisetifolia	Australian Pine	15	40	30	Poor	Remove	N/A
13	Cocos nucifera	Coconut Palm	10	30	15	Fair	Remove	\$1,455.00

NOTE: All height and canopy numbers are in feet. Palm height is overall height.

CITY OF POMPANO NOTES:

- Trees must be protected during entire project until completion.
- \*No tree/palm roots or parts shall be cut or damaged due to construction activities on site. If there are any tree/palm root conflicts, contact Urban Forestry Staff for assistance 954-786-452P

PALMS AND TREES MITIGATION						
3 non specimen Coconut palms with a diameter of 32" to be removed. The proposed landscape plan has 3 Additional Sabal palms to cover the required mitigation.						
1 non specimen tree to be removed with 16" to be mitigated. The proposed landscape plan has 6 additional trees to cover the required mitigation.						
Please see tree replacement breakdown below:						
QTY	Species / Name	Inches	Total Inches	Unit Cost	Installed Unit cost	Total Cost
2	Clusia rosea / Pitch Apple	3 Inches each	6 Inches	\$350 Each	\$875	\$1,750
4	Tabebuia heterophylla	3 Inches each	12 Inches	\$180 Each	\$450	\$1,800
3	Sabal Palmetto / Sabal Palm	12 Inches each	36 Inches	\$160 Each	\$400	\$1,200
TOTAL			54 Inches			\$4,750

